



Product Warranty



Linear Output Warranty

# X-CHROS L Monocrystalline PERC High Efficiency SHINGLED

405 - 410 - 415 - 420 - 425 Wp



Shingled solar cells



Positive Tolerance



High Voltage 1500 Vdc



Beautiful Appearance



Superior Safety and Reliability

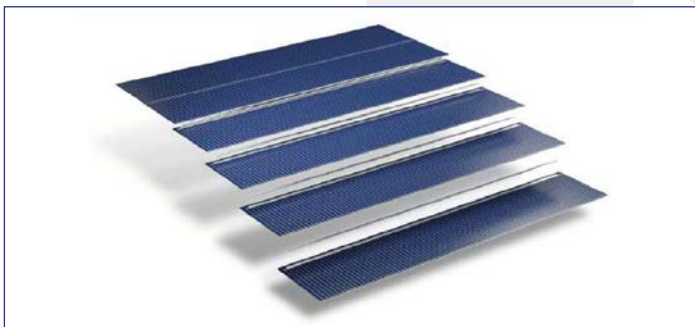


21.40 % max efficiency

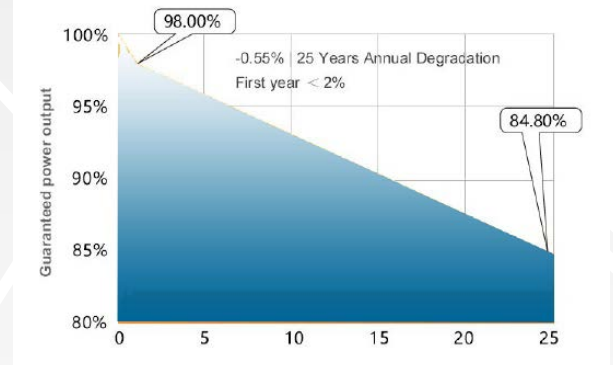


AR coating glass

The new photovoltaic modules X-CHROS L is one of a wide range of products made by Sunerg and It is manufactured according to IEC 61215, IEC 61730 standard and CE. PERC Shingled Technology provides ultra -high efficiency with better performance in low irradiation. Maximizes installation capacity in limited space



LINEAR WARRANTY



CORRESPOND TO

| UNI9177 | PV CYCLE | CE |

UNI EN ISO 9001:2008

| Quality management system

UNI EN ISO 14001:2004

| Standards for environmental management system

UNI EN BS OHSAS 18001:2007

| International standards for occupational health and safety

**ELECTRICAL DATA (STC)**

		XMCH88405QBW+HBF	XMCH88410QBW+HBF	XMCH88415QBW+HBF	XMCH88420QBW+HBF	XMCH88425QBW+HBF
Open circuit Voltage	(Voc)	41.30 V	41.40 V	41.50 V	41.60 V	41.70 V
Voltage a Pmax.	(Vmp)	34.30 V	34.40 V	34.40 V	34.50 V	34.60 V
Short-circuit current	(Isc)	12.53 A	12.65 A	12.80 A	12.92 A	13.03 A
Current at Pmax.	(Imp)	11.86 A	11.97 A	12.08 A	12.19 A	12.30 A
Peak Power (Pmax) Tolerance		405 Wp	410 Wp	415 Wp	420 Wp	425 Wp
Module Efficiency		20.40%	20.60%	20.90%	21.10%	21.40%
Maximum voltage		1500 V DC	1500 V DC	1500 V DC	1500 V DC	1500 V DC
Maximum series fuse rating		25A	25A	25A	25A	25A
Operating Temperature		-40°C - +85°C	-40°C - +85°C	-40°C - +85°C	-40°C - +85°C	-40°C - +85°C

Tolerance electric measurement ±3%

\* STC (Standard test conditions)

 Irradiance 1000 w/m<sup>2</sup>, module temperature 25°C, AM= 1.5

**TEMPERATURE COEFFICIENT**

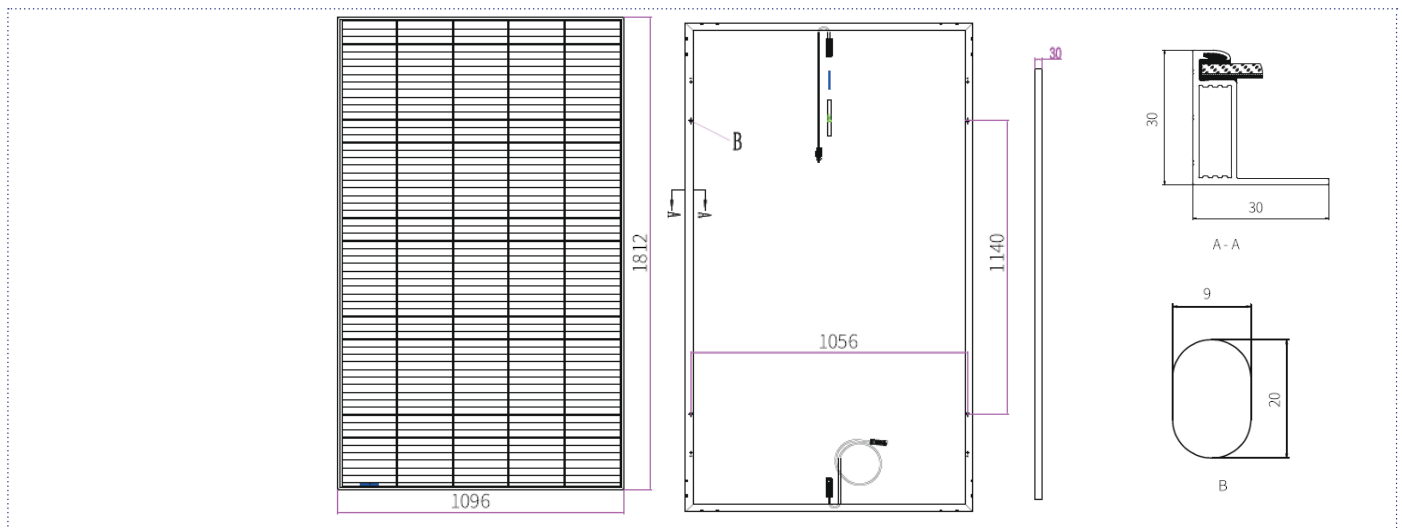
NMOT	42.3°C±2°C
Pmax Temperature Coefficient	-0.34%/ °C
Voc Temperature Coefficient	-0.27%/ °C
Isc Temperature Coefficient	0.04% / °C

**MECHANICAL CHARACTERISTIC**

Max. surface load capacity (Pa)	front 5400 back 2400
Dimensions (mm)	1812 x 1096 x 30
Weight (Kg)	20.8
Encapsulation	EVA
Cells	305 (61*5)

**CONFIGURAZIONE DEL PAKAGING**

Moduls a pallet	36
Moduls per Container	924


**GENERAL INFORMATION**

Glass	AR coating tempered glass, 3.2mm
Farme	Anodized Aluminum alloy
Juntion Box	IP68, 2 Bypass diodes
Output Cable - connectors	4.0mm <sup>2</sup> , +1300 mm /-1300 mm

Sunerg Solar S.r.l. reserves the right to make changes to the technical data of the product without prior notice. The technical details of the form, although included with the utmost care, may contain errors or inaccuracies not attributable to Sunerg Solar S.r.l.